



Spotlighting
Industry
Growth

District Energy Space '08

More than 326 million
square feet reported

Dedicated to the growth and utilization of district energy as a means to enhance energy efficiency, provide more sustainable and reliable energy infrastructure, and contribute to improving the global environment.

The publication of *District Energy Space* has become an annual tradition for the International District Energy Association since 1990. This issue features a compilation of data provided by our members including the number of buildings and their area in square feet that have been committed or recommitted to district energy service in North America and beyond North America during the calendar year 2008. Previously unreported buildings and space are also presented and described accordingly.

District Energy Space '08

Industry Growth Around the World

Established in 1909, the International District Energy Association (IDEA) serves as a vital communications and information hub for the district energy industry, connecting industry professionals and advancing the technology around the world. With headquarters just outside of Boston, Mass., IDEA comprises over 1,200 district heating and cooling system executives, managers, engineers, consultants and equipment suppliers from 25 countries. IDEA supports the growth and utilization of district energy as a means to conserve fuel, increase energy efficiency and reduce emissions to improve the global environment.

Each year, IDEA asks all of its member systems to provide information on buildings that committed or recommitted to district energy service during the previous calendar year. For each building, *District Energy Space* provides the following information:

- Building name and type
- Service provider's name and location
- Building area in square feet
- Services provided (heating, domestic hot water, laundry, cooling, ice-making, pool warming, etc.)

District Energy Space not only enables IDEA to record the year-to-year growth experienced by its member systems, but also can be a valuable marketing asset for your organization. All systems submitting entries will receive an **IDEA Certificate of Participation**. During the IDEA 100th Annual Conference in Washington, D.C., June 28–July 1, 2009, IDEA will congratulate and present awards to those systems submitting the greatest amount of total square footage and the greatest number of total buildings for 2008 for both North America and Beyond North America.

District Energy Space 2008 is available digitally by downloading from IDEA's Web site, www.districtenergy.org/de_space.htm. You may download the entire publication, specific building category sections and past issues.

Summary for 2008

District Energy system growth has been strong, despite a challenging economy in the U.S. and beyond. Our members reported that 126 North American customer buildings totaling 39,897,947 sq ft of space were committed or recommitted to district energy service during 2008. An additional 9 buildings comprising 5,074,108 sq feet committed or recommitted to district energy service in 2007, but were previously unreported.

The resulting North American total of 44,972,055 sq ft, added to IDEA's running total of square footage of 422,714,867 sq ft committed to North American district energy systems since 1990, brings the current reported total for North America to 467,686,922 sq ft.

IDEA is also pleased to be able to report solid system growth from beyond North America. An additional 281,870,939 sq ft and 2,815 buildings were reported for 2008. Details are described at the end of this publication.

Stand Up and Be Recognized for 2009

Make plans now to photograph and enter your customer buildings that commit or recommit for your district energy service during 2009! The deadline for submittal of buildings for 2009 is **Fri., April 2, 2010**.

Continuing our tradition, during the IDEA 101st Annual Conference in Indianapolis, Indiana, in June 2010, IDEA will congratulate and present awards to those systems submitting the greatest amount of total square footage and the greatest number of total buildings for 2009 for both North America and Beyond North America. We look forward to hearing from you!

2008 Square Footage Reported*

Category	North America	Beyond North America
Commercial-Mixed Use	8,711,625	136,932,609
Commercial-Office	10,086,498	17,507,536
Commercial-Retail/Manufacturing	90,554	3,754,565
Commercial-Other	1,286,400	6,725,934
Entertainment, Cultural or Sporting Center	1,061,200	64,200
Government	1,015,808	8,568,560
Hotel	4,812,855	16,266,625
Residential	5,702,193	92,050,910
School, Hospital or Institution	10,082,922	-0-
Other	2,122,000	-0-
Square Footage Reported 2008	44,972,055	281,870,939

2008 Total Reported in North America and Beyond North America **326,842,994**

* All entries are newly signed, connected or renewed customers during calendar year 2008, including 5,074,108 sq feet previously unreported in North America for calendar year 2007. (Renewal = renewed/recommitted to a long-term service agreement of 10 years or greater.)

North America

Commercial–Mixed Use

1 S. Franklin

Thermal Chicago Corporation
Chicago, Ill.
115,000 sq ft—cooling

215 N. Michigan

Thermal Chicago Corporation
Chicago, Ill.
800,000 sq ft—cooling

350 N. Orleans

Thermal Chicago Corporation
Chicago, Ill.
952,996 sq ft—cooling, process

670 N. Michigan

Thermal Chicago Corporation
Chicago, Ill.
380,000 sq ft—cooling

City Center

NRG Energy Center Minneapolis LLC
Minneapolis, Minn.
2,620,000 sq ft—heating, domestic hot water

Claypool Courts

Citizens Thermal
Indianapolis, Ind.
126,000 sq ft—heating, cooling, domestic hot water, humidification

IDS Center

NRG Energy Center Minneapolis LLC
Minneapolis, Minn.
2,469,273 sq ft—heating

Simon Multeck Community Center Phase II

Austin Energy
Austin, Tex.
588,356 sq ft—cooling

The Hakimian Group

Con Edison Steam Operations
New York, N.Y.
660,000 sq ft—heating, domestic hot water

Commercial–Office

1 E. Pratt St.

Comfort Link
Baltimore, Md.
352,000 sq ft—cooling, refrigeration\

11 S. LaSalle

Thermal Chicago Corporation
Chicago, Ill.
290,000 sq ft—cooling

155 N. Wacker

Thermal Chicago Corporation
Chicago, Ill.
1,125,000 sq ft—cooling, process

200 Fifth Avenue Owners LLC

Con Edison Steam Operations
New York, N.Y.
623,716 sq ft—heating, domestic hot water, kitchen



1 E. Pratt St



IDS Center



City Center

200 S. Michigan

Thermal Chicago Corporation
Chicago, Ill.
357,000 sq ft—cooling

300 E. Randolph

Thermal Chicago Corporation
Chicago, Ill.
900,000 sq ft—cooling

325 N. Wells

Thermal Chicago Corporation
Chicago, Ill.
154,112 sq ft—cooling

400 E. Pratt

Comfort Link
Baltimore, Md.
150,000 sq ft—cooling

Africa Israel

Con Edison Steam Operations
New York, N.Y.
714,745 sq ft—heating

Goldman-Sachs

Con Edison Steam Operations
New York, N.Y.
1,800,000 sq ft—heating, domestic hot water

LCOR Inc.

Con Edison Steam Operations
New York, N.Y.
116,882 sq ft—heating

NYC DOS

Con Edison Steam Operations
New York, N.Y.
457,202 sq ft—heating, domestic hot water



400 E. Pratt

Office tower

Veolia North America – Trigen-Kansas City system
Kansas City, Mo.
200,000 sq ft—heating, cooling

Office tower

Veolia North America – Trigen-Oklahoma City system
Oklahoma City, Mo.
292,000 sq ft—heating, cooling, domestic hot water

Office tower

Veolia North America – Trigen-Boston system
Boston, Mass.
1,020,000 sq ft—heating, domestic hot water

Office tower

Veolia North America – Trigen-Philadelphia system
Philadelphia, Penn.
1,200,000 sq ft—heating, domestic hot water, kitchen

Offices

Veolia North America – Trigen-Boston system
Boston, Mass.
130,000 sq ft—heating, domestic hot water

Offices

Veolia North America – Trigen-Boston system
Boston, Mass.
55,000 sq ft—heating

Seton Headquarters

Austin Energy
Austin, Tex.
148,841 sq ft—cooling



155 N. Wacker



Seton Headquarters

Commercial– Retail/Manufacturing

Convio, Inc.

Austin Energy
Austin, Tex.
87,454 sq ft—cooling

Iron Design Center

Seattle Steam
Seattle, Wash.
3,100 sq ft—heating, domestic hot water, process

Commercial–Other

225 N. Columbus

Thermal Chicago Corporation
Chicago, Ill.
1,100,000 sq ft—cooling, refrigeration

333 E. Benton

Thermal Chicago Corporation
Chicago, Ill.
180,000 sq ft—cooling

627 First Ave. Bldg

Seattle Steam
Seattle, Wash.
2,400 sq ft—heating, domestic hot water, process

Hanny's

Northwind Phoenix
Phoenix, Ariz.
4,000 sq ft—cooling



225 N. Columbus

Entertainment, Cultural or Sporting Center

Arena

Veolia North America – Trigen-Oklahoma City system
Tulsa, Okla.
580,000 sq ft—heating, cooling, domestic hot water, kitchen, ice-making

Indiana Repertory Theatre

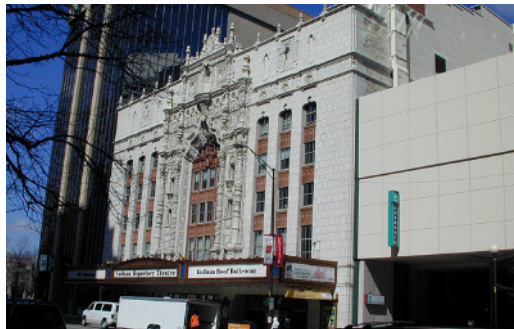
Citizens Thermal
Indianapolis, Ind.
180,000 sq ft—heating, cooling, domestic hot water, humidification

Indiana Roof Ballroom

Citizens Thermal
Indianapolis, Ind.
20,000 sq ft—heating, cooling, domestic hot water, humidification

Landmark Center

District Energy St. Paul
St. Paul, Minn.
157,600 sq ft—cooling



Indiana Repertory Theatre



333 E. Benton



Landmark Center

Maryland Stadium Authority Sports Legend

Comfort Link
Baltimore, Md.
50,000 sq ft—cooling

Museum

Veolia North America – Trigen-Atlanta system
Atlanta, Ga.
10,000 sq ft—cooling

Museum of Arts and Design

Con Edison Steam Operations
New York, N.Y.
63,600 sq ft—heating, domestic hot water, humidification



Maryland Stadium Authority
Sports Legend Museum



Museum of Arts
and Design

Government

Baltimore City Police HQ

Comfort Link
Baltimore, Md.
270,000 sq ft—cooling

Detroit-Wayne Joint Building

Detroit Thermal, LLC
Detroit, Mich.
745,508 sq ft—heating, domestic hot water

U.S. Post Office

Veolia North America – Trigen-Philadelphia system
Philadelphia, Penn.
25,000 sq ft—heating

Hotel

71 E. Wacker

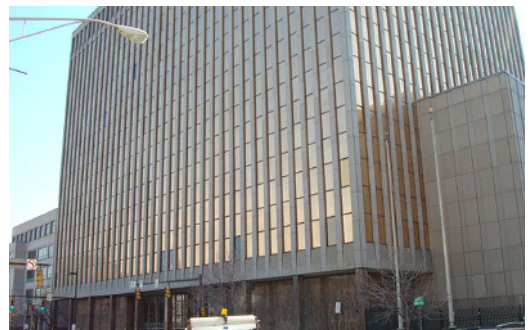
Thermal Chicago Corporation
Chicago, Ill.
250,000 sq ft—cooling

200 N. Michigan

Thermal Chicago Corporation
Chicago, Ill.
120,000 sq ft—cooling

205-225 N. Michigan

Thermal Chicago Corporation
Chicago, Ill.
38,000 sq ft—cooling



Baltimore City Police HQ

Hotel - continued

Bayrock Sapir Organization LLC

Con Edison Steam Operations
New York, NY
386,435 sq ft—heating, domestic hot water, kitchen

Detroit Riverside Hotel

Detroit Thermal, LLC
Detroit, Mich.
500,000 sq ft—heating

Embassy Suites Hotel

Citizens Thermal
Indianapolis, Ind.
250,000 sq ft—heating, cooling, domestic hot water, humidification

Fitzpatrick Grand Central Hotel

Con Edison Steam Operations
New York, N.Y.
64,614 sq ft—heating, domestic hot water

Hilton Hotel

Comfort Link
Baltimore, Md.
660,000 sq ft—cooling



Detroit Riverside Hotel



Embassy Suites Hotel

Hotel

Veolia North America – Trigen-Baltimore system
Baltimore, Md.
713,000 sq ft—heating, domestic hot water, kitchen, pool

Hotel

Veolia North America – Trigen-Philadelphia system
Philadelphia, Penn.
250,000 sq ft—heating, domestic hot water, kitchen

Hotel

Veolia North America – Trigen-Philadelphia system
Philadelphia, Penn.
225,000 sq ft—heating, domestic hot water, process

Hotel

Westin Domain/SWD Operating Company
Austin Energy
Austin, Tex.
210,806 sq ft—cooling



Hilton Hotel



Westin Domain

Hotel - continued

Sheraton Phoenix Downtown Hotel

Northwind Phoenix
Phoenix, Ariz.
1,100,000 sq ft—cooling

Tremont Grand

Comfort Link
Baltimore, Md.
45,000 sq ft—cooling, refrigeration

Residential

39 W. Lexington St.

Comfort Link
Baltimore, Md.
180,000 sq ft—cooling

85 W. Broadway LLC

Con Edison Steam Operations
New York, N.Y.
90,000 sq ft—heating, domestic hot water

110 E. Washington

Citizens Thermal
Indianapolis, Indiana
125,000 sq ft—cooling



Sheraton Phoenix Downtown Hotel



39 W. Lexington St.

110 W. Grant

NRG Energy Center Minneapolis LLC
Minneapolis, Minn.
332,000 sq ft—heating

235 W. Van Buren

Thermal Chicago Corporation
Chicago, Ill.
900,000 sq ft—cooling

Apartments

Veolia North America – Trigen-Philadelphia system
Philadelphia, Penn.
50,000 sq ft—heating, domestic hot water

Apartments

Veolia North America – Trigen-Trenton system
Trenton, N.J.
212,000 sq ft—heating, cooling, domestic hot water

Arizona State University—Taylor Place

Northwind Phoenix
Phoenix, Ariz.
362,000 sq ft—cooling

Casa 74th Development LLC

Con Edison Steam Operations
New York, N.Y.
325,000 sq ft—heating, domestic hot water

Condominiums (1)

Veolia North America – Trigen-Philadelphia system
Philadelphia, Penn.
130,000 sq ft—heating, domestic hot water



110 W. Grant



Arizona State University—Taylor Place

Condominiums (2)

Veolia North America – Trigen-Philadelphia system
Philadelphia, Penn.
440,000 sq ft—heating, domestic hot water

Condominiums (3)

Veolia North America – Trigen-Philadelphia system
Philadelphia, Penn.
440,000 sq ft—heating, domestic hot water

Condominiums

Veolia North America – Trigen-Atlanta
Atlanta, Ga.
700,000 sq ft—cooling

K-W 650 Associates LLC

Con Edison Steam Operations
New York, N.Y.
112,500 sq ft—heating, domestic hot water, kitchen

Fulton Club LLC

Con Edison Steam Operations
New York, N.Y.
28,000 sq ft—heating

Marquette Place

NRG Energy Center Minneapolis LLC
Minneapolis, Minn.
452,613 sq ft—heating, swimming pool

MPC 56 LLC

Con Edison Steam Operations
New York, N.Y.
113,500 sq ft—heating, domestic hot water



Arizona State University - Walter Cronkite
School of Journalism and Mass
Communications

Related Companies

Con Edison Steam Operations
New York, N.Y.
300,580 sq ft—heating, domestic hot water

The William

Con Edison Steam Operations
New York, N.Y.
409,000 sq ft—heating, domestic hot water

School, Hospital, Institution

Arizona State University—Walter Cronkite School of Journalism and Mass Communications

Northwind Phoenix
Phoenix, Ariz.
225,000 sq ft—cooling

Biomedical Engineering Building (BME)

The University of Texas at Austin
Austin, Tex.
140,700 sq ft—heating, cooling, domestic hot water,
compressed air

Campbell Hall Addition

University of Virginia
Charlottesville, Va.
10,200 sq ft—heating, cooling, domestic hot water



Biomedical Engineering Building (BME)

Carter-Harrison Research Building (MR-6)

University of Virginia

Charlottesville, Va.

189,000 sq ft—heating, cooling, domestic hot water, humidification, process

Chilling Station 6 (CS6)

The University of Texas at Austin

Austin, Tex.

39,308 sq ft—heating, cooling, domestic hot water, compressed air

Claude Moore Nursing Education Building

University of Virginia

Charlottesville, Va.

31,300 sq ft—heating, cooling, domestic hot water



Carter-Harrison
Research Building

Dell Pediatrics Institute

Austin Energy

Austin, Tex.

150,000 sq ft—cooling

Detroit Medical Center

Detroit Thermal, LLC

Detroit, Mich.

4,242,211 sq ft—heating, domestic hot water, process

Fairbanks Hall/Clarian Health Partners and IU School of Medicine

Citizens Thermal

Indianapolis, Ind.

182,000 sq ft—heating, cooling, domestic hot water, humidification

Harborview Ninth & James

Seattle Steam

Seattle, Wash.

450,000 sq ft—heating, domestic hot water, process



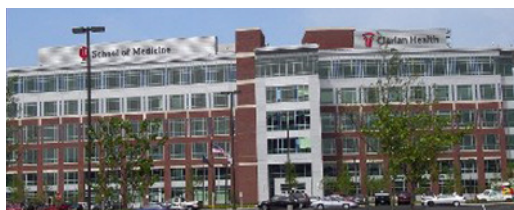
Dell Pediatrics Institute



Chilling Station 6 (CS6)



Detroit Medical Center



Fairbanks Hall/Clarian Health Partners
and IU School of Medicine

Herbert M. Hanson, Jr. Hall

University of Minnesota, Twin Cities

Minneapolis, Minn.

68,807 sq ft—heating, cooling, domestic hot water

Higher Education

Veolia North America – Trigen-Baltimore system

Baltimore, Md.

120,000 sq ft—heating, domestic hot water

Higher Education

Veolia North America – Trigen-Philadelphia system

Philadelphia, Penn.

125,000 sq ft—heating, humidification

Indiana University Simon Cancer Center

Citizens Thermal

Indianapolis, Ind.

405,000 sq ft—heating, cooling, domestic hot water, humidification



Harborview Ninth & James

IUPUI Research III

Citizens Thermal

Indianapolis, Ind.

254,000 sq ft—heating, cooling, domestic hot water, humidification

Kellogg House

University of Virginia

Charlottesville, Va.

54,172 sq ft—heating, cooling, domestic hot water

McLeod Hall

University of Virginia

Charlottesville, Va.

129,707 sq ft—cooling

MDA Pickens Tower

Thermal Energy Corporation (TECO)

Houston, Tex.

750,000 sq ft—cooling

Medical Center

Veolia North America – Trigen-Philadelphia system

Philadelphia, Penn.

400,000 sq ft—heating, domestic hot water, process



Indiana University Simon Cancer Center



Herbert M. Hanson, Jr. Hall



IUPUI Research III

Memorial Sloan Kettering

Con Edison Steam Operations

New York, N.Y.

240,000 sq ft—heating, domestic hot water, humidification

Office Tower

Veolia North America – Trigen-Philadelphia system

Philadelphia, Penn.

150,000 sq ft—heating, domestic hot water

Regions Hospital Expansion

District Energy St. Paul

St. Paul, Minn.

386,090 sq ft—heating, domestic hot water

Rehabilitation Institute of Michigan

Detroit Thermal, LLC

Detroit, Mich.

229,913 sq ft—heating, domestic hot water, process

Robertson Hall

University of Virginia

Charlottesville, Va.

115,052 sq ft—heating, cooling, domestic hot water, humidification, process

Ruffin Hall

University of Virginia

Charlottesville, Va.

43,007 sq ft—heating, cooling, domestic hot water

Shands Cancer Hospital

Gainesville Regional Utilities

Gainesville, Fla.

515,000 sq ft—heating, cooling, domestic hot water, process, kitchen, refrigeration, standby power



Memorial Sloan Kettering



Rehabilitation Institute of Michigan



Regions Hospital Expansion



Shands Cancer Hospital

Swedish Orthopedic Institute

Seattle Steam

Seattle, Wash.

372,000 sq ft—heating, domestic hot water, process

Wesley United Methodist Church

NRG Energy Center Minneapolis LLC

Minneapolis, Minn.

25,000 sq ft—heating, domestic hot water, humidification

World Wide Holdings

Con Edison Steam Operations

New York, N.Y.

40,455 sq ft—heating, domestic hot water, kitchen

Other

Basilica of the Immaculate Conception

Comfort Link

Baltimore, Md.

40,000 sq ft—cooling



Wesley United Methodist Church

Church

Veolia North America – Trigen-Boston system

Boston, Mass.

100,000 sq ft—heating, domestic hot water

Church

Veolia North America – Trigen-Philadelphia system

Philadelphia, Penn.

50,000 sq ft—heating

Phoenix Convention Center—North Building

Northwind Phoenix

Phoenix, Arizona

1,900,000 sq ft—cooling

Superior Ambulance

Detroit Thermal, LLC

Detroit, Mich.

7,000 sq ft—heating, domestic hot water



Basilica of the Immaculate Conception



Swedish Orthopedic Institute



Phoenix Convention Center—
North Building

Beyond North America

Commercial— Mixed Use

B2B Project [4,850 TR]

Tabreed (National Central Cooling Company)
Abu Dhabi, United Arab Emirates
1,384,152 sq ft—cooling

Business Bay phase 1 & 2

Empower—Emirates Central Cooling Systems Corporation
Dubai, United Arab Emirates
78,079,000 sq ft—cooling

DHCC phase 2

Empower—Emirates Central Cooling Systems Corporation
Dubai, United Arab Emirates
14,400,000 sq ft—cooling

Dubai World Trade Center

Empower—Emirates Central Cooling Systems Corporation
Dubai, United Arab Emirates
9,919,000 sq ft—cooling

Durrah Tower

Tabreed (National Central Cooling Company)
Dubai, United Arab Emirates
688,545 sq ft—cooling

Hotel, Commercial & Residential Complex

Tabreed (National Central Cooling Company)
Abu Dhabi, United Arab Emirates
1,219,000 sq ft—cooling

Jumeirah Lake Towers

Palm District Cooling LLC
Dubai, United Arab Emirates
19,551,756 sq ft—cooling

Khalid Al Atar Tower [2,100 TR]

Tabreed (National Central Cooling Company)
Dubai, United Arab Emirates
464,000 sq ft—cooling

Palm Jumeirah Trunk

Palm District Cooling LLC
Dubai, United Arab Emirates
10,579,806 sq ft—cooling

Rolex Tower (Dubai) [2,200 TR]

Tabreed (National Central Cooling Company)
Dubai, United Arab Emirates
564,960 sq ft—cooling

Shkha Muhara (350 TR)

Tabreed (National Central Cooling Company)
Ras Al Khaimah, United Arab Emirates
82,390 sq ft—cooling



Jumeirah Lake Towers



Palm Jumeirah Trunk

Commercial–Office

Al Arabia Tower

Tabreed (National Central Cooling Company)
Abu Dhabi, United Arab Emirates
385,200 sq ft—cooling

Al Farida Mixed Use Development [4,000 TR]

Tabreed (National Central Cooling Company)
Abu Dhabi, United Arab Emirates
856,000 sq ft—cooling

Al Raha Gardens (AD07) [36,159 TR]

Tabreed (National Central Cooling Company)
Abu Dhabi, United Arab Emirates
8,273,179 sq ft—cooling

Link Investment

Tabreed (National Central Cooling Company)
Abu Dhabi, United Arab Emirates
263,220 sq ft—cooling

Petroleum Exp

Tabreed (National Central Cooling Company)
Abu Dhabi, United Arab Emirates
845,300 sq ft—cooling

West Bay Area—Doha

Qatar District Cooling Company
Doha, Qatar
2,544,857 sq ft—cooling

West Bay Area—Doha

Qatar District Cooling Company
Doha, Qatar
4,211,380 sq ft—cooling



Al Rahah Gardens

Zayed Higher Organization for Humanitarian Care, Special Needs & Minor Affairs [600 TR]

Tabreed (National Central Cooling Company)
Abu Dhabi, United Arab Emirates
128,400 sq ft—cooling

Commercial–Retail/ Manufacturing

The Pearl Qatar

Qatar District Cooling Company
Qatar
714,562 sq ft—cooling

The Pearl Qatar

Qatar District Cooling Company
Qatar
3,040,003 sq ft—cooling

Commercial–Other

Central Market AD08 [27,836 TR]

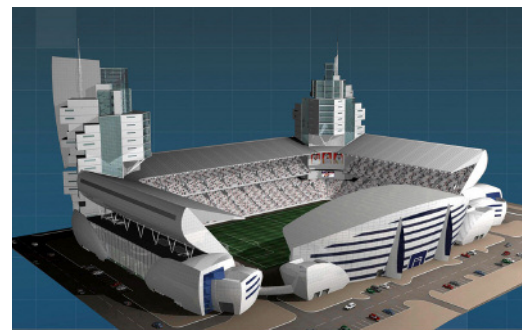
Tabreed (National Central Cooling Company)
Abu Dhabi, United Arab Emirates
6,552,594 sq ft—cooling

Jaber Al Suwaidi Building

Tabreed (National Central Cooling Company)
Abu Dhabi, United Arab Emirates
100,152 sq ft—cooling



Central Market AD08



Al Jazirah Sports Club

Noora Al Abdouli Building

Tabreed (National Central Cooling Company)
Abu Dhabi, United Arab Emirates
73,188 sq ft—cooling

Entertainment, Cultural or Sporting Center

Al Jazirah Club [300 TR]

Tabreed (National Central Cooling Company)
Abu Dhabi, United Arab Emirates
64,200 sq ft—cooling

Government

Dubai Metro-RED Line [36,400 TR]

Tabreed (National Central Cooling Company)
Dubai, United Arab Emirates
8,568,560 sq ft—cooling

Hotel

Palm Jumeirah Crescent

Palm District Cooling LLC
Dubai, United Arab Emirates
11,431,960 sq ft—cooling, kitchen



Dubai Metro-RED Line

The Pearl Qatar

Qatar District Cooling Company
Qatar
1,643,447 sq ft—cooling

West Bay Area—Doha

Qatar District Cooling Company
Doha, Qatar
3,191,198 sq ft—cooling

Residential

Ajman Corniche Residence [7,903 TR]

Tabreed (National Central Cooling Company)
Ajman, United Arab Emirates
1,691,242 sq ft—cooling

Al Jazirah Towers [1,500 TR]

Tabreed (National Central Cooling Company)
Abu Dhabi, United Arab Emirates
321,000 sq ft—cooling



Jumeirah Islands Villas



Palm Jumeirah Crescent



Discovery Gardens

Discovery Gardens

Palm District Cooling LLC
Dubai, United Arab Emirates
23,747,352 sq ft—cooling

Jumeirah Islands Villas

Palm District Cooling LLC
Dubai, United Arab Emirates
2,967,000 sq ft—cooling

Sh. Salama Bint Mubarak

Tabreed (National Central Cooling Company)
Abu Dhabi, United Arab Emirates
187,250 sq ft—cooling

The Gardens Residential Complex

Palm District Cooling LLC
Dubai, United Arab Emirates
5,160,000 sq ft—cooling

The Pearl Qatar

Qatar District Cooling Company
Qatar
1,893,911 sq ft—cooling

The Pearl Qatar

Qatar District Cooling Company
Qatar
32,335,271 sq ft—cooling

The Pearl Qatar

Qatar District Cooling Company
Qatar
8,595,540 sq ft—cooling

The Pearl Qatar

Qatar District Cooling Company
Qatar
5,000,147 sq ft—cooling

West Bay Area—Doha

Qatar District Cooling Company
Doha, Qatar
4,411,696 sq ft—cooling

West Bay Area—Doha

Qatar District Cooling Company
Doha, Qatar
5,740,501 sq ft—cooling

Submit your District Energy Space entries for 2009

Make plans now to photograph and enter your customer buildings that commit or recommit for your district energy service during 2009! The deadline for submittal of buildings for 2009 is **Fri., April 2, 2010**.

To enter your newly committed, recommitted or connected or customers for 2009, please download and complete the District Energy 2009 entry form, which is an Excel® spreadsheet, at www.districtenergy.org/09DESpace_entries.xls. We cordially encourage you also to submit photographs of your customer buildings to showcase their architecture: JPEG format is fine; file size should be 1 MB to ensure adequate resolution.

Complete the spreadsheet—listing all buildings—and send it and your photos to Len Phillips at len.idea@districtenergy.org. Please use the Excel form exactly as provided and fill in all cells to expedite information compilation.

DEADLINE: Fri., April 2, 2009.

To download District Energy Space 2008 or view past issues, visit www.districtenergy.org/de_space.htm.



24 Lyman Street—Suite 230
Westborough MA 01581, USA
Tel: +1 508-366-9339
Fax +1 508-366-0019
www.districtenergy.org

Copyright ©2008 International District Energy Association. ALL RIGHTS RESERVED. This publication contains proprietary content of International District Energy Association (IDEA) which is protected by copyright, trademark and other intellectual property rights. No part of this publication or any "Information" (as defined below) contained herein may be reproduced (by photocopying or otherwise), transmitted, stored (in a database, retrieval system, or otherwise), or otherwise used through any means without the express prior written permission of IDEA. "Information" means any and all information, data, specific products, services, processes, procedures, designs, techniques, technical data, editorial material, advice, instructions, opinions or any other content appearing or referenced in this publication.

IDEA has prepared this publication for informational purposes only. IDEA has exercised reasonable care in producing the Information contained in this publication. The appearance of any Information in this publication does not constitute endorsement, warranty or guaranty by IDEA of any product, service, process, procedure, design or the like. IDEA does not make any representation or warranties about the suitability or accuracy of the Information in this publication or that the Information in this publication is error-free. All Information presented in this work is provided "as is" without warranty of any kind. IDEA disclaims all warranties and conditions of any kind, express or implied, including all implied warranties and conditions of merchantability, fitness for a particular purpose, title and non-infringement. The Information contained in this publication may be superseded, may contain errors, and/or may include inaccuracies. IDEA shall not be liable for any special, indirect, incidental, consequential or any damages whatsoever resulting from inconvenience, or loss of use, resources, or profits, whether in an action of contract, negligence or other tortious action, arising out of or in connection with the use or performance of any of the Information available in this publication even if IDEA has been advised of the possibility of such damages or losses. IDEA invites comments, criticisms and suggestions regarding the subject matter in this publication, including notice of errors or omissions.